

Caring for the homeless since 1940...

Volunteers Needed

If you have a heart for those who are hurting and in need, WE NEED YOUR HELP! Special help for various types of projects, such as repairs, food preparation, teaching, sewing, etc.

Statistics

	<u>2007</u>	<u>2008</u>	<u>2009</u>
<u>Men's Emergency Lodge</u>			
Public Dinner	12,022	11,673	10,278
Shelter Nights	25,684	27,607	27,557
ELG Meals	40,293	42,994	42,365
<u>Women's Emergency Lodge</u>			
Lodging — Adults	2,705	3,212	2,052
Lodging — Children	883	671	1,789
Meals	5,904	7,465	8,712
<u>New Hope Family Shelter</u>			
Lodging — Adults	5,748	8,001	7,383
Lodging — Children	2,465	3,561	4,293
Meals Served	12,037	13,617	19,187
<u>New Life Program Grads</u>			
Men (Phase I only)	13	19	70%
Women (Phase I only)	14	15	Success Rate
<u>Total</u>			
Meals Served	105,125	106,659	101,406
Lodgings	52,484	58,743	59,600

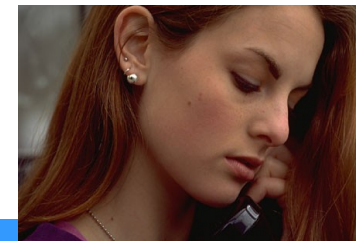
Visit our website: www.GCRMS.org or call (209) 466-2138 for more information.

Gospel Center
RESCUE
Mission

**Gospel Center
Rescue Mission**
445 S. San Joaquin Street
Stockton, CA 95203
Phone: (209) 466-2138
Fax: (209) 320-2322
E-Mail: info@gcrms.org

Participating
Agency of
United Way
San Joaquin County

Gospel Center Rescue Mission



“I tell you the truth, whatever you did for one of the least of these brothers of mine, you did for me.” Matt 25:40

Mission Statement

The Gospel Center Rescue Mission is a non-profit organization of Christians and other caring people whose mission is to minister to the needs of the homeless of Stockton and San Joaquin County including individuals suffering from substance abuse without regard to race, gender, nationality or religion.

We affirm the value of human life through the expression of unconditional love while meeting the essential needs of individuals and families whose destitution and/or addiction has separated them from their family and society.

We fulfill our mission by providing food, clothing, shelter, education, counseling, life management/addiction issues programs, spiritual support and follow-up assistance. Our objective is that every client will be a responsible person, living in a supportive community (church, spouse and friends), with a job and permanent housing.

Serves...

New Hope Family Shelter

A transitional facility for homeless women and single mothers.

Three different programs to meet the physical, mental and spiritual needs of those in crisis.

- **Three Programs:** Emergency Lodge Program (2 week stay), Life Skills Program (6 month-18 month stay), and New Life Program (6 month-36 month stay)
- 3 Meals a day / Clothing
- Christian Counseling / Chapel Services
- Learning Center for parents & children
- Classes on nutrition, budgeting, family issues, and addiction issues
- Clients must save 80% of their income
- A supportive environment to recuperate and rebuild their lives



*single moms
&
single women*

Medical Respite Care

This program offers homeless individuals a safe place to rest while completing their medical recovery.

The client receives assistance with medical services while also receiving the care that our other homeless clients receive — housing, food, clothing, hygiene items, and case management.



*respite care
for men
& women*

Supportive Housing

This program assists families from the New Hope Family Shelter to independent living.

The client receives assistance with a percentage of their monthly rent (through federal funds) for up to 18 months. The parent(s) must have a job or attend educational classes that lead to a job.



*working
parent(s)*

New Life Programs

The New Life Program is a recovery life style program to manage life from addiction to recovery for men and women.

The NLP provides classes dealing with spiritual, emotional and physical issues of men and women.

The classes and activities include: Family Dysfunction, Relapse Prevention, Nutrition, Anger Management, Christian counseling, Learning Center, Work Therapy Program, Bible Study and Evening Chapel.

New Life Program Plus.

The second phase where clients begin to make and pay restitution to society. They begin employment and/or to go to school and to pay program fees. The final phase extends for another 2 years for stability in the **Hope Houses**.



*men & women
in addiction*

Representative Payee Services

Representative Payee Services is designed to assist clients who receive Social Security Income for disability and/or mental health problems to manage and budget their monthly checks.



disabled

Emergency Lodge Guest Programs

This program meets the physical and spiritual needs of homeless men, women and children from the surrounding communities of San Joaquin County.

Services provided:

Clean Bed * Clothes * Dinner * Breakfast
Showers * Hygiene products
Evening Chapel * Locker Rentals



*homeless men,
women, &
children*